



# GMT MONTHLY MEMBERSHIP PROGRESS REPORT Results as of: 12/31/2023

Multiple District 3

LOCATION: OKLAHOMA

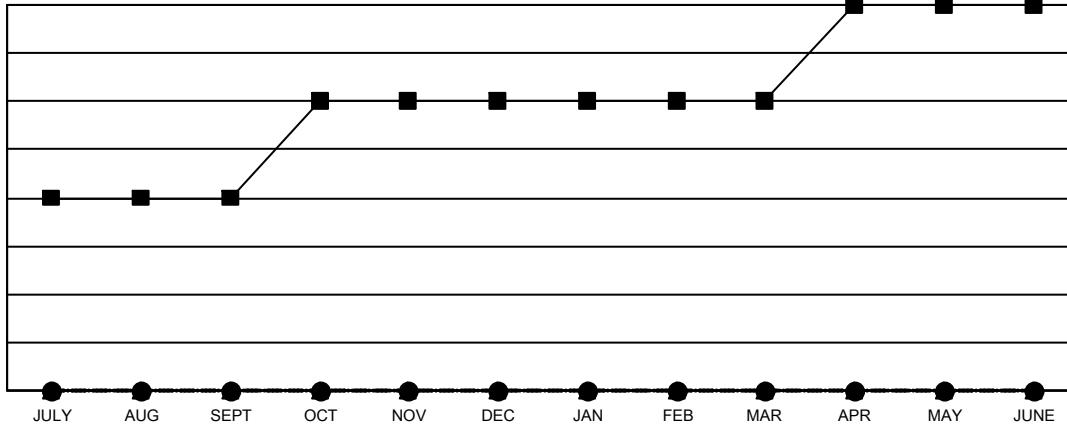
GMT: OPEN

GMT CA 1

Clubs			
RESULTS FOR 2023-2024			
QUARTER	NEW CLUB GOAL	NEW CLUBS	DROPPED CLUBS
JULY/AUG/SEPT	2	0	0
OCT/NOV/DEC	1	0	3
JAN/FEB/MAR	0	0	0
APR/MAY/JUNE	1	0	0

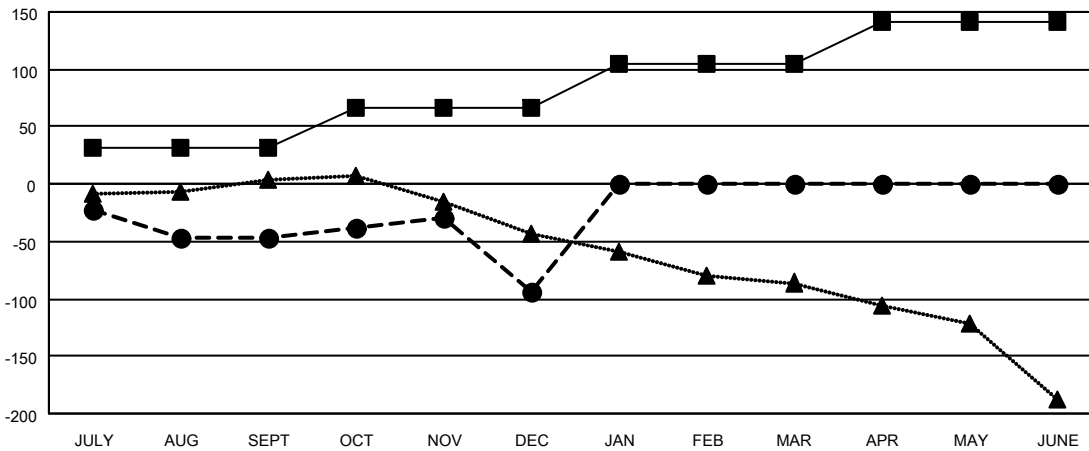
Members			
RESULTS FOR 2023-2024			
QUARTER	MEMBER GROWTH NET GOAL	MEMBER GROWTH ACTUAL	DROPPED MEMBERS ACTUAL (including transfers)
JULY/AUG/SEPT	32	82	106
OCT/NOV/DEC	35	66	110
JAN/FEB/MAR	37	0	0
APR/MAY/JUNE	37	0	0

**GOALS AND ACTUAL NEW CLUBS CUMULATIVE**



- - CURRENT YEAR GOALS FOR NEW CLUBS
- - CURRENT YEAR ACTUAL NEW CLUBS
- ▲ - LAST YEAR ACTUAL NEW CLUBS

**GOALS AND ACTUAL MEMBERS CUMULATIVE**



- - MEMBER GROWTH NET GOAL
- - MEMBER GROWTH ACTUAL
- ▲ - LAST YEAR MEMBERSHIP ACTUAL

DROPPED CLUBS: 3	58 CLUBS OF 136 ADDED 1 OR MORE NEW MEMBERS	<b>GENDER DISTRIBUTION</b>
<b>DROPPED MEMBERS</b>		MALE            1,871 (65.76%)
DECEASED            23		FEMALE         974 (34.24%)
CLUB CANCELLED     4	<a href="#">CLICK HERE FOR CUMULATIVE MEMBERSHIP DATA</a>	TOTAL FAMILY UNIT MEMBERS            421
OTHER                    189		FAMILY MEMBERS PAYING HALF DUES                                    212
<b>TOTAL                    216</b>		